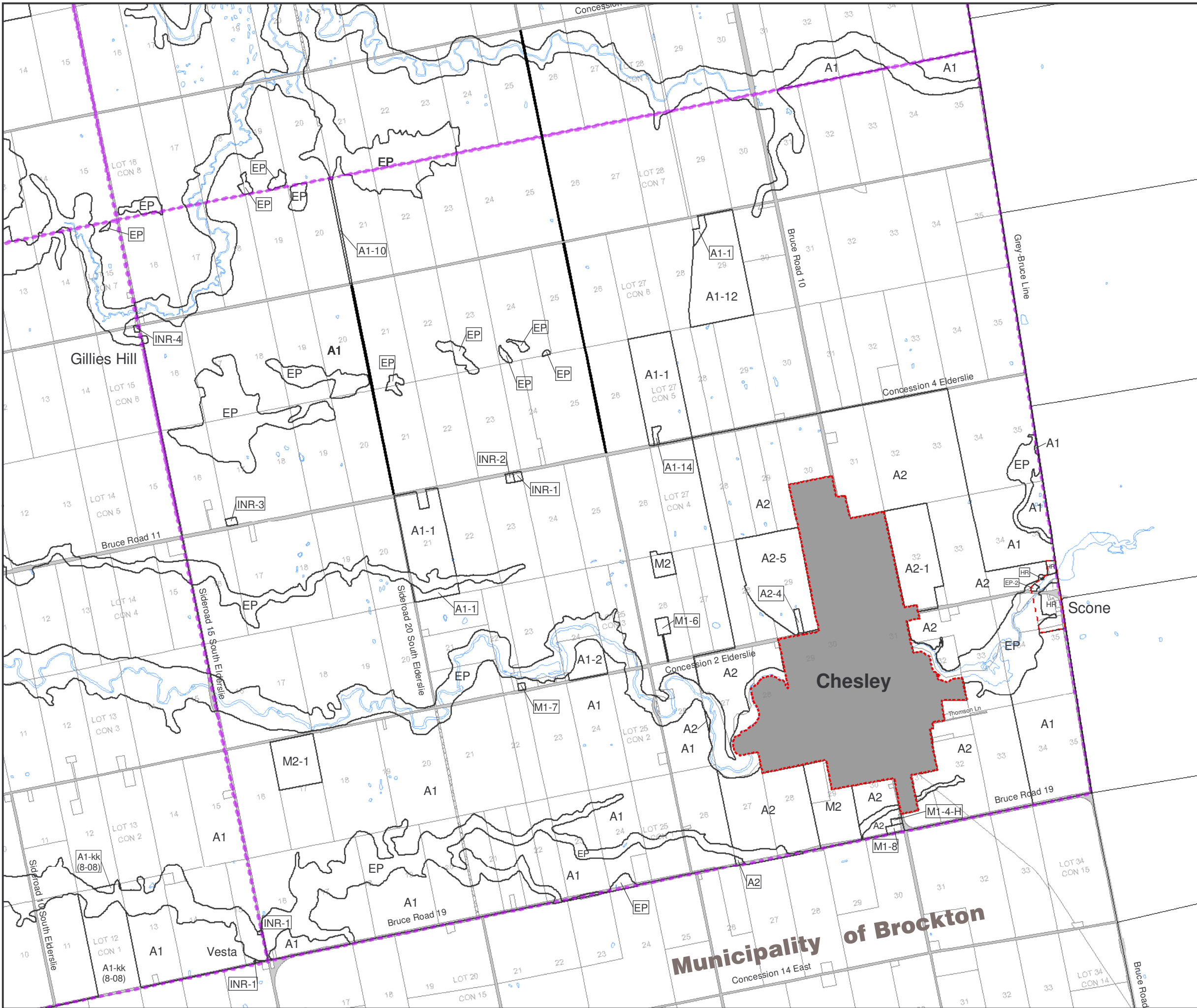


MUNICIPALITY OF ARRAN-ELDERSLIE



FORMER ELDERSLIE TWP  
ZONING MAP 8

SCALE 1:35,000



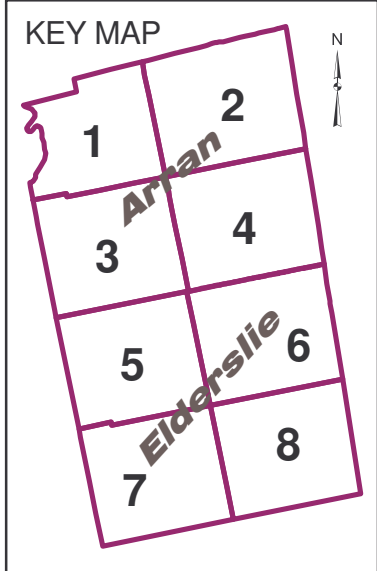
— Class 1 Road  
 — Class 2 Road

THIS IS SCHEDULE 'A' TO COMPREHENSIVE ZONING BY-LAW NO. \_\_\_\_\_ PASSED THIS DAY OF \_\_\_\_\_.

MAYOR \_\_\_\_\_  
 CLERK \_\_\_\_\_

Date Revised:  
 Closed PCL - July 2005  
 Closed Zoning - July 2005

NOTE:  
 The Saugeen Valley Conservation Authority's Development, Interference with Wetlands and Alterations to Shorelines and Watercourses Regulation (Ontario Regulation 169/69) may apply to lands zoned Environmental Protection, within 50 metres of the EP zone or lands within 30 metres of a wetland. The SVCA should be contacted prior to the commencement of any works or development within the lands described in this Note to determine the area to which the SVCA Regulation will apply.



Prepared by:  
 County of Bruce Planning and Economic Development Department Printed: October, 2008